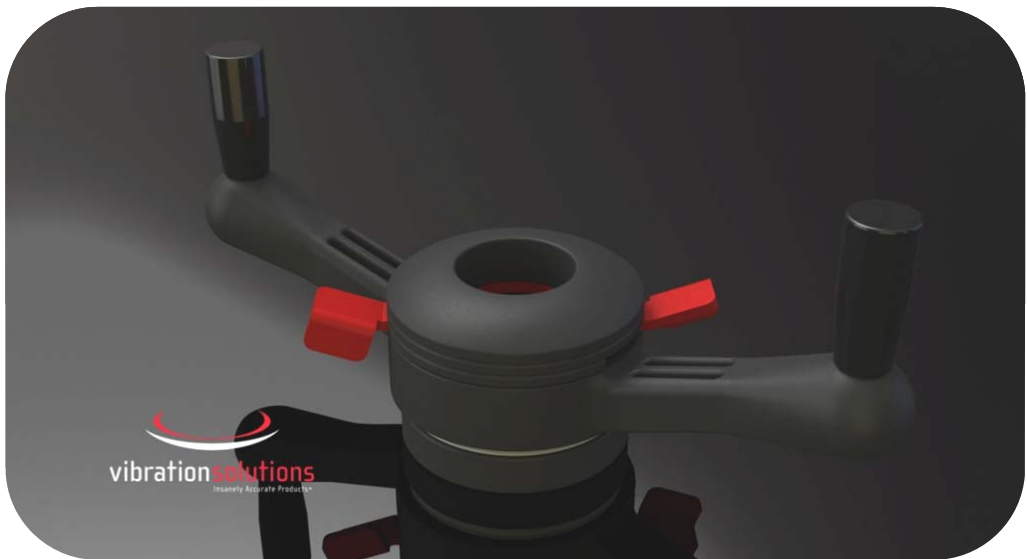


*The world's highest quality wheel balancing adaptors,
manufactured in North Carolina, USA.*

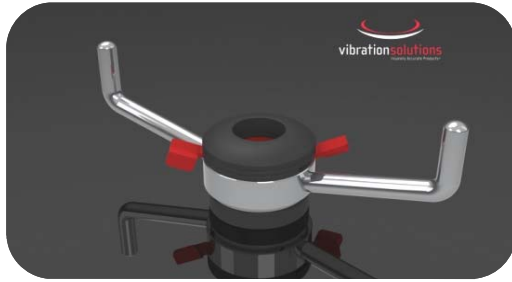


vibrationsolutions
Insanely Accurate Products™



SpeedNut™

How To Order

**SpeedNut Steel - With Thrust Bearing**

Thrust Bearing (*Provides huge increase in torque without further operator effort*).

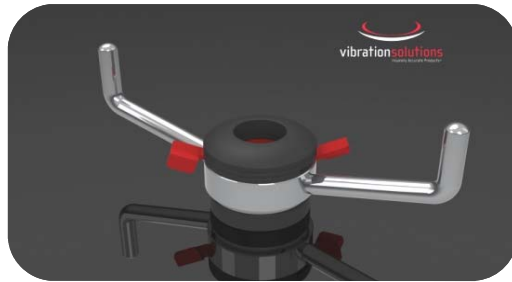
Threaded Jaw set (*Modern extra torque design*).

Ergonomic Release Lever (*Comfortable for the operator*).

Built-in Turning Handles (*Faster to use*).

Part Number: **V142-xxx-02** (*Replace xxx with balancer's thread code*).

Includes Pressure Ring

**SpeedNut Steel - With Thrust Bearing****Special version - Hunter**

Thrust Bearing (*Provides huge increase in torque without further operator effort*).

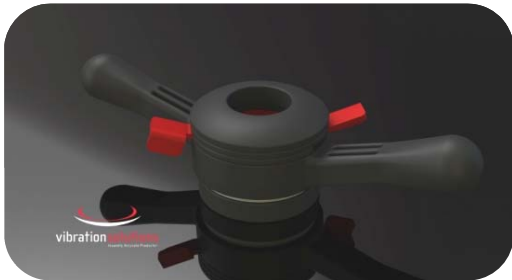
Threaded Jaw set (*Modern extra torque design*).

Ergonomic Release Lever (*Comfortable for the operator*).

Built-in Turning Handles (*Faster to use*).

Part Number: **V142-408-03**

Use OEM Pressure Ring and Pressure Cup

**SpeedNut Composite**

Threaded Jaw set (*Modern extra torque design*).

Ergonomic Release Lever (*Comfortable for the operator*).

Part Number: **V144-xxx-01** (*Replace xxx with balancer's thread code*).

Includes Pressure Ring

**SpeedNut Composite****With Turning Handles**

Threaded Jaw set (*Modern extra torque design*).

Ergonomic Release Lever (*Comfortable for the operator*).

Built-in Turning Handles (*Faster to use*).

Part Number: **V144-xxx-11** (*Replace xxx with balancer's thread code*).

Includes Pressure Ring

**Pressure Ring Turned Nylon**

Fits SpeedNut as well as competitor's QuickNut.

Turned from solid Nylon 6/6.

Best choice for steel SpeedNut/QuickNut as well as customers living at high altitude with very dry and cold weather.

Part Number: **M142-000-01**

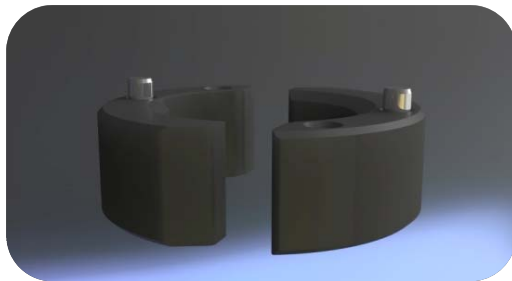
How To Order

**Pressure Cup Composite**

Fits SpeedNut as well as Haweka Quicknut. Diameter 4.92" (125mm). Much stronger than competitor's which help ensure the wheel is forced straight, thereby improving balancing results. Not all Pressure Cups are made the same, but of course, CenTor Plates and SpeedPlates are a far better choice than a Pressure Cup.
Part Number: **M140-000-02**

**Rubber Cap**

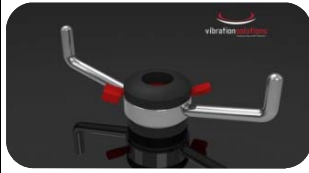
Helps to protect the finish on aluminum wheels. Used together with Pressure Cup M140-000-02.
Part Number: **M140-000-03**

**Replacement Threaded Jaw Set**

Fits SpeedNut as well as competitor's QuickNut. Through hardened for great durability, but not as hard as the balancer's shafts, to avoid premature shaft wear. Modern design and manufacturing method provides better grip and torque than competitor's.
Part Number: **M142-xxx-01** (Replace xxx with balancer's thread code).

Models

5100 / 5600 (serial # 51-0623 to 51-1457) / 5800 / 6000



SpeedNut Steel - With Bearing

Includes: Pressure Ring.

V142-403-02

SpeedNut Kit Steel - With Bearing

Includes: Pressure Ring, Pressure Cup & Rubber Cap

V148-403-02



SpeedNut Composite

Includes: Pressure Ring.

V144-403-01

SpeedNut Kit Composite

Includes: Pressure Ring, Pressure Cup & Rubber Cap

V148-403-03



SpeedNut Composite - With Turning Handles

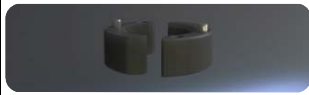
Includes: Pressure Ring.

V144-403-11

SpeedNut Kit Composite - With Turning Handles

Includes: Pressure Ring, Pressure Cup & Rubber Cap

V148-403-04



Threaded Jaw Set Replacement Part

Fits SpeedNut as well as Haweka Quicknut.

M142-403-01

Models

1250 / 1260 / 1450 / 1550 / 1650 / 1850



SpeedNut Steel - With Bearing

Includes: Pressure Ring.

V142-404-02

SpeedNut Kit Steel - With Bearing

Includes: Pressure Ring, Pressure Cup & Rubber Cap

V148-404-02



SpeedNut Composite

Includes: Pressure Ring.

V144-404-01

SpeedNut Kit Composite

Includes: Pressure Ring, Pressure Cup & Rubber Cap

V148-404-03



SpeedNut Composite - With Turning Handles

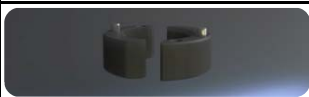
Includes: Pressure Ring.

V144-404-11

SpeedNut Kit Composite - With Turning Handles

Includes: Pressure Ring, Pressure Cup & Rubber Cap


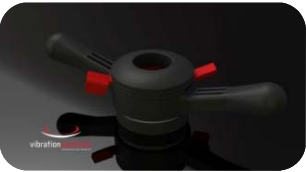

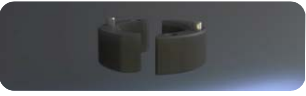
V148-404-04

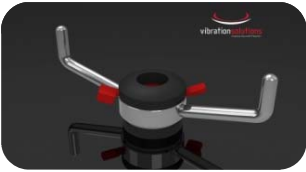


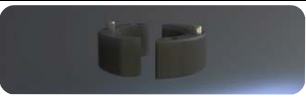


Threaded Jaw Set Replacement Part

Fits SpeedNut as well as Haweka Quicknut.

M142-404-01

Models		1200 / 1220 / 1400 / 1420 / 1500 / 1520 / 1820	
	<p>SpeedNut Steel - With Bearing Includes: Pressure Ring.</p>	V142-405-02	
	<p>SpeedNut Kit Steel - With Bearing Includes: Pressure Ring, Pressure Cup & Rubber Cap</p>	V148-405-02	
	<p>SpeedNut Composite Includes: Pressure Ring.</p>	V144-405-01	
	<p>SpeedNut Kit Composite Includes: Pressure Ring, Pressure Cup & Rubber Cap</p>	V148-405-03	
	<p>SpeedNut Composite - With Turning Handles Includes: Pressure Ring.</p>	V144-405-11	
	<p>SpeedNut Kit Composite - With Turning Handles Includes: Pressure Ring, Pressure Cup & Rubber Cap</p>	V148-405-04	
	<p>Threaded Jaw Set Replacement Part Fits SpeedNut as well as Haweka Quicknut.</p>	M142-405-01	

BEAR		SPEEDNUTS & PARTS	
Models		80-1010 / 80-1011 / 80-1012 / 80-1013	
	<p>SpeedNut Steel - With Bearing Includes: Pressure Ring.</p>	V142-404-02	
	<p>SpeedNut Kit Steel - With Bearing Includes: Pressure Ring, Pressure Cup & Rubber Cap</p>	V148-404-02	
	<p>SpeedNut Composite Includes: Pressure Ring.</p>	V144-404-01	
	<p>SpeedNut Kit Composite Includes: Pressure Ring, Pressure Cup & Rubber Cap</p>	V148-404-03	
	<p>SpeedNut Composite - With Turning Handles Includes: Pressure Ring.</p>	V144-404-11	
	<p>SpeedNut Kit Composite - With Turning Handles Includes: Pressure Ring, Pressure Cup & Rubber Cap</p>	V148-404-04	
	<p>Threaded Jaw Set Replacement Part Fits SpeedNut as well as Haweka Quicknut.</p>	M142-404-01	

Models

80-303



SpeedNut Steel - With Bearing

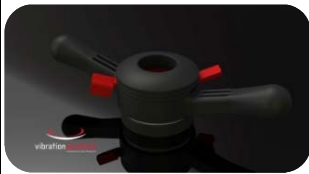
Includes: Pressure Ring.

V142-405-02

SpeedNut Kit Steel - With Bearing

Includes: Pressure Ring, Pressure Cup & Rubber Cap

V148-405-02



SpeedNut Composite

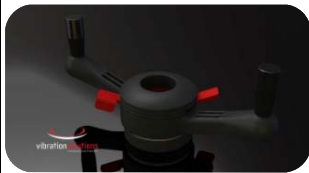
Includes: Pressure Ring.

V144-405-01

SpeedNut Kit Composite

Includes: Pressure Ring, Pressure Cup & Rubber Cap

V148-405-03



SpeedNut Composite - With Turning Handles

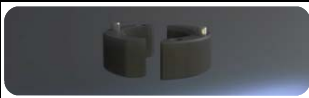
Includes: Pressure Ring.

V144-405-11

SpeedNut Kit Composite - With Turning Handles

Includes: Pressure Ring, Pressure Cup & Rubber Cap

V148-405-04



Threaded Jaw Set Replacement Part

Fits SpeedNut as well as Haweka Quicknut.

M142-405-01

Models

All / Alle / Tout



SpeedNut Steel - With Bearing

Includes: Pressure Ring.

V142-403-02

SpeedNut Kit Steel - With Bearing

Includes: Pressure Ring, Pressure Cup & Rubber Cap

V148-403-02



SpeedNut Composite

Includes: Pressure Ring.

V144-403-01

SpeedNut Kit Composite

Includes: Pressure Ring, Pressure Cup & Rubber Cap

V148-403-03



SpeedNut Composite - With Turning Handles

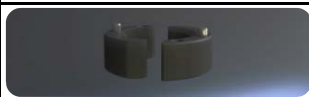
Includes: Pressure Ring.

V144-403-11

SpeedNut Kit Composite - With Turning Handles

Includes: Pressure Ring, Pressure Cup & Rubber Cap

V148-403-04






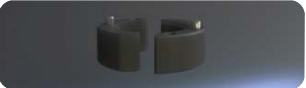
Threaded Jaw Set Replacement Part

Fits SpeedNut as well as Haweka Quicknut.

M142-403-01

Models

310 / 410 / 520 / 720 / 820HD

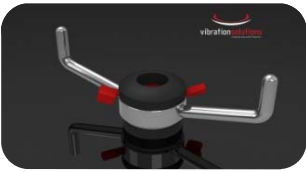


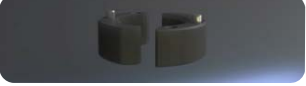
	SpeedNut Steel - With Bearing Includes: Pressure Ring.	V142-404-02	
	SpeedNut Kit Steel - With Bearing Includes: Pressure Ring, Pressure Cup & Rubber Cap	V148-404-02	
	SpeedNut Composite Includes: Pressure Ring.	V144-404-01	
	SpeedNut Kit Composite Includes: Pressure Ring, Pressure Cup & Rubber Cap	V148-404-03	
	SpeedNut Composite - With Turning Handles Includes: Pressure Ring.	V144-404-11	
	SpeedNut Kit Composite - With Turning Handles Includes: Pressure Ring, Pressure Cup & Rubber Cap	V148-404-04	
	Threaded Jaw Set Replacement Part Fits SpeedNut as well as Haweka Quicknut.	M142-404-01	

CEMB

SPEEDNUTS & PARTS

Models

All / Alle / Tout (01/1995>)

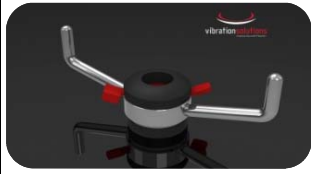
	SpeedNut Steel - With Bearing Includes: Pressure Ring.	V142-404-02	
	SpeedNut Kit Steel - With Bearing Includes: Pressure Ring, Pressure Cup & Rubber Cap	V148-404-02	
	SpeedNut Composite Includes: Pressure Ring.	V144-404-01	
	SpeedNut Kit Composite Includes: Pressure Ring, Pressure Cup & Rubber Cap	V148-404-03	
	SpeedNut Composite - With Turning Handles Includes: Pressure Ring.	V144-404-11	
	SpeedNut Kit Composite - With Turning Handles Includes: Pressure Ring, Pressure Cup & Rubber Cap	V148-404-04	
	Threaded Jaw Set Replacement Part Fits SpeedNut as well as Haweka Quicknut.	M142-404-01	

COATS

SPEEDNUTS & PARTS

Models

700 / 850 / 1000 / 1001 / 1004 / 1025 / 1050 / 1055 / 1250

Models with Coats 40mm over-shaft**SpeedNut Steel - With Bearing**

Includes: Pressure Ring.

V142-488-02

SpeedNut Kit Steel - With Bearing

Includes: Pressure Ring, Pressure Cup & Rubber Cap

V148-488-02

**SpeedNut Composite**

Includes: Pressure Ring.

V144-488-01

SpeedNut Kit Composite

Includes: Pressure Ring, Pressure Cup & Rubber Cap

V148-488-03

**SpeedNut Composite - With Turning Handles**

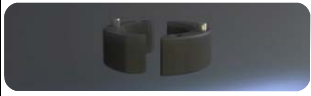
Includes: Pressure Ring.

V144-488-11

SpeedNut Kit Composite - With Turning Handles

Includes: Pressure Ring, Pressure Cup & Rubber Cap

V148-488-04

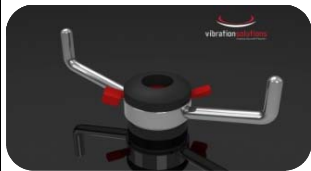
**Threaded Jaw Set Replacement Part**

Fits SpeedNut as well as Haweka Quicknut.

M142-488-01

Models

700 / 850 / 1000 / 1001 / 1004 / 1025 / 1050 / 1055 / 1250

Models with Coats 28.56mm course Acme stub thread**SpeedNut Steel - With Bearing**

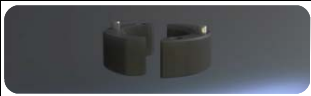
Includes: Pressure Ring.

V142-288-02

SpeedNut Kit Steel - With Bearing

Includes: Pressure Ring, Pressure Cup & Rubber Cap

V148-288-02

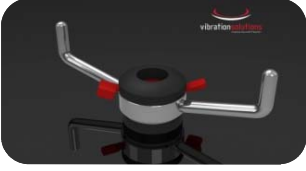


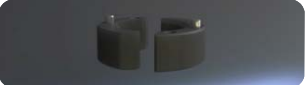
**Threaded Jaw Set Replacement Part**

Fits SpeedNut as well as Haweka Quicknut.

M142-288-01

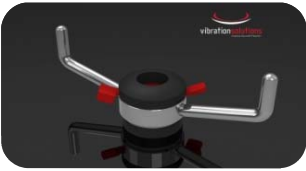
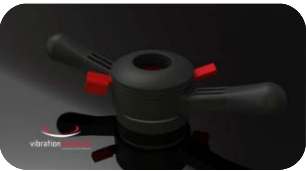

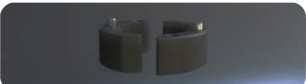
Models

XR1750 / XR1800 / XR1850

	SpeedNut Steel - With Bearing Includes: Pressure Ring.	V142-404-02	
	SpeedNut Kit Steel - With Bearing Includes: Pressure Ring, Pressure Cup & Rubber Cap	V148-404-02	
	SpeedNut Composite Includes: Pressure Ring.	V144-404-01	
	SpeedNut Kit Composite Includes: Pressure Ring, Pressure Cup & Rubber Cap	V148-404-03	
	SpeedNut Composite - With Turning Handles Includes: Pressure Ring.	V144-404-11	
	SpeedNut Kit Composite - With Turning Handles Includes: Pressure Ring, Pressure Cup & Rubber Cap	V148-404-04	
	Threaded Jaw Set Replacement Part Fits SpeedNut as well as Haweka Quicknut.	M142-404-01	

Models

775 / 875 / 1175

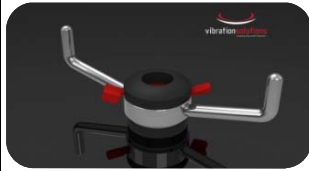
	SpeedNut Steel - With Bearing Includes: Pressure Ring.	V142-488-02	
	SpeedNut Kit Steel - With Bearing Includes: Pressure Ring, Pressure Cup & Rubber Cap	V148-488-02	
	SpeedNut Composite Includes: Pressure Ring.	V144-488-01	
	SpeedNut Kit Composite Includes: Pressure Ring, Pressure Cup & Rubber Cap	V148-488-03	
	SpeedNut Composite - With Turning Handles Includes: Pressure Ring.	V144-488-11	
	SpeedNut Kit Composite - With Turning Handles Includes: Pressure Ring, Pressure Cup & Rubber Cap	V148-488-04	
	Threaded Jaw Set Replacement Part Fits SpeedNut as well as Haweka Quicknut.	M142-488-01	

CORGHI

SPEEDNUTS & PARTS

Models

All / Alle / Tout (01/2007>)

**SpeedNut Steel - With Bearing**

Includes: Pressure Ring.

V142-403-02

**SpeedNut Kit Steel - With Bearing**

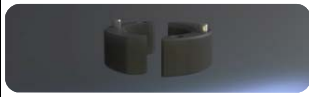
Includes: Pressure Ring, Pressure Cup & Rubber Cap

V148-403-02

**SpeedNut Composite**

Includes: Pressure Ring.

V144-403-01

**SpeedNut Kit Composite**

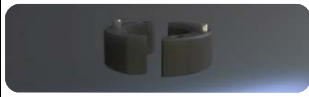
Includes: Pressure Ring, Pressure Cup & Rubber Cap

V148-403-03

**SpeedNut Composite - With Turning Handles**

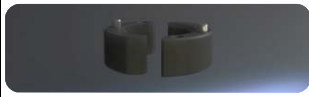
Includes: Pressure Ring.

V144-403-11

**SpeedNut Kit Composite - With Turning Handles**

Includes: Pressure Ring, Pressure Cup & Rubber Cap

V148-403-04

**Threaded Jaw Set Replacement Part**

Fits SpeedNut as well as Haweka Quicknut.

M142-403-01

FAIP

SPEEDNUTS & PARTS

Models

All / Alle / Tout (01/2007>)

**SpeedNut Steel - With Bearing**

Includes: Pressure Ring.

V142-403-02

**SpeedNut Kit Steel - With Bearing**

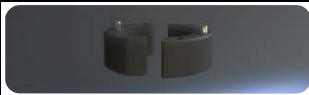
Includes: Pressure Ring, Pressure Cup & Rubber Cap

V148-403-02

**SpeedNut Composite**

Includes: Pressure Ring.

V144-403-01

**SpeedNut Kit Composite**

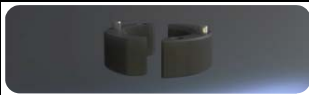
Includes: Pressure Ring, Pressure Cup & Rubber Cap

V148-403-03

**SpeedNut Composite - With Turning Handles**

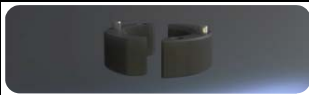
Includes: Pressure Ring.

V144-403-11

**SpeedNut Kit Composite - With Turning Handles**

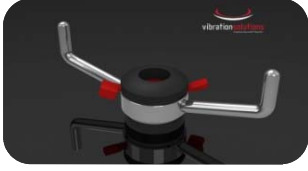



Includes: Pressure Ring, Pressure Cup & Rubber Cap

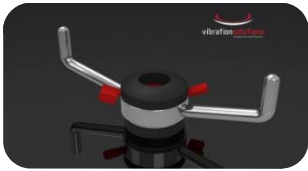


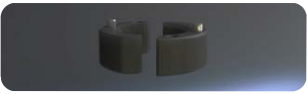
V148-403-04

**Threaded Jaw Set Replacement Part**

Fits SpeedNut as well as Haweka Quicknut.

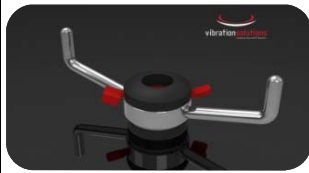
M142-403-01

FMC		SPEEDNUTS & PARTS	
Models		All / Alle / Tout	
	SpeedNut Steel - With Bearing Includes: Pressure Ring.	V142-404-02	
	SpeedNut Kit Steel - With Bearing Includes: Pressure Ring, Pressure Cup & Rubber Cap	V148-404-02	
	SpeedNut Composite Includes: Pressure Ring.	V144-404-01	
	SpeedNut Kit Composite Includes: Pressure Ring, Pressure Cup & Rubber Cap	V148-404-03	
	SpeedNut Composite - With Turning Handles Includes: Pressure Ring.	V144-404-11	
	SpeedNut Kit Composite - With Turning Handles Includes: Pressure Ring, Pressure Cup & Rubber Cap	V148-404-04	
	Threaded Jaw Set Replacement Part Fits SpeedNut as well as Haweka Quicknut.	M142-404-01	

HOFMANN		SPEEDNUTS & PARTS	
Models		All / Alle / Tout	
	SpeedNut Steel - With Bearing Includes: Pressure Ring.	V142-405-02	
	SpeedNut Kit Steel - With Bearing Includes: Pressure Ring, Pressure Cup & Rubber Cap	V148-405-02	
	SpeedNut Composite Includes: Pressure Ring.	V144-405-01	
	SpeedNut Kit Composite Includes: Pressure Ring, Pressure Cup & Rubber Cap	V148-405-03	
	SpeedNut Composite - With Turning Handles Includes: Pressure Ring.	V144-405-11	
	SpeedNut Kit Composite - With Turning Handles Includes: Pressure Ring, Pressure Cup & Rubber Cap	V148-405-04	
	Threaded Jaw Set Replacement Part Fits SpeedNut as well as Haweka Quicknut.	M142-405-01	

Models

700 / DSP9500 (1990-1992) With fine thread



SpeedNut Steel - With Bearing
Includes: Pressure Ring.

V142-403-02

SpeedNut Kit Steel - With Bearing
Includes: Pressure Ring, Pressure Cup & Rubber Cap

V148-403-02



SpeedNut Composite
Includes: Pressure Ring.

V144-403-01

SpeedNut Kit Composite
Includes: Pressure Ring, Pressure Cup & Rubber Cap

V148-403-03

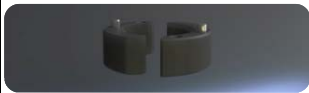


SpeedNut Composite - With Turning Handles
Includes: Pressure Ring.

V144-403-11

SpeedNut Kit Composite - With Turning Handles
Includes: Pressure Ring, Pressure Cup & Rubber Cap

V148-403-04

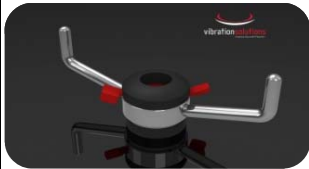


Threaded Jaw Set Replacement Part
Fits SpeedNut as well as Haweka Quicknut.

M142-403-01

Models

DSP7700 / DSP8500 / DSP9000 / DSP9100 / DSP9200
DSP9500 / DSP9600 / DSP9700 / GSP9200 / GSP9600



SpeedNut Steel - With Bearing
Includes: Pressure Ring.

V142-408-02

SpeedNut Kit Steel - With Bearing
Includes: Pressure Ring, Pressure Cup & Rubber Cap

V148-408-02

SpeedNut Steel - With Bearing
Special version: Use OEM Pressure Ring & Cup.

V142-408-03



SpeedNut Composite
Includes: Pressure Ring.

V144-408-01

SpeedNut Kit Composite
Includes: Pressure Ring, Pressure Cup & Rubber Cap

V148-408-03

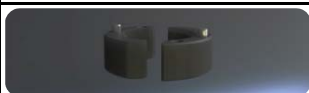


SpeedNut Composite - With Turning Handles
Includes: Pressure Ring.

V144-408-11

SpeedNut Kit Composite - With Turning Handles
Includes: Pressure Ring, Pressure Cup & Rubber Cap

V148-408-04



Threaded Jaw Set Replacement Part
Fits SpeedNut as well as Haweka Quicknut.

M142-408-01

Models

GSP9700



SpeedNut Steel - With Bearing

Includes: Pressure Ring.

V142-408-02

SpeedNut Kit Steel - With Bearing

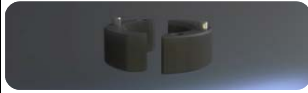
Includes: Pressure Ring, Pressure Cup & Rubber Cap

V148-408-02

SpeedNut Steel - With Bearing

Special version: Use OEM Pressure Ring & Cup.

V142-408-03



Threaded Jaw Set Replacement Part

Fits SpeedNut as well as Haweka Quicknut.

M142-408-01

JOHN BEAN

SPEEDNUTS & PARTS

Models

3.2 / 3.3 / 3.5 / 5.1 / 5.7 / 6.6 / 7.5 / 7.6



SpeedNut Steel - With Bearing

Includes: Pressure Ring.

V142-404-02

SpeedNut Kit Steel - With Bearing

Includes: Pressure Ring, Pressure Cup & Rubber Cap

V148-404-02



SpeedNut Composite

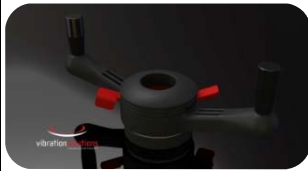
Includes: Pressure Ring.

V144-404-01

SpeedNut Kit Composite

Includes: Pressure Ring, Pressure Cup & Rubber Cap

V148-404-03



SpeedNut Composite - With Turning Handles

Includes: Pressure Ring.

V144-404-11

SpeedNut Kit Composite - With Turning Handles

Includes: Pressure Ring, Pressure Cup & Rubber Cap

V148-404-04



Threaded Jaw Set Replacement Part

Fits SpeedNut as well as Haweka Quicknut.

M142-404-01

Models

8.5 / 8.6 / 8.7 / 9.7 / BFH800 / BFH1000 / VPI Series

**SpeedNut Steel - With Bearing**

Includes: Pressure Ring.

V142-405-02

SpeedNut Kit Steel - With Bearing

Includes: Pressure Ring, Pressure Cup & Rubber Cap

V148-405-02

**SpeedNut Composite**

Includes: Pressure Ring.

V144-405-01

SpeedNut Kit Composite

Includes: Pressure Ring, Pressure Cup & Rubber Cap

V148-405-03

**SpeedNut Composite - With Turning Handles**

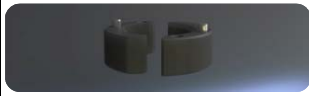
Includes: Pressure Ring.

V144-405-11

SpeedNut Kit Composite - With Turning Handles

Includes: Pressure Ring, Pressure Cup & Rubber Cap

V148-405-04

**Threaded Jaw Set Replacement Part**

Fits SpeedNut as well as Haweka Quicknut.

M142-405-01

M & B *Bear*

SPEEDNUTS & PARTS

Models

All / Alle / Tout

**SpeedNut Steel - With Bearing**

Includes: Pressure Ring.

V142-403-02

SpeedNut Kit Steel - With Bearing

Includes: Pressure Ring, Pressure Cup & Rubber Cap

V148-403-02

**SpeedNut Composite**

Includes: Pressure Ring.

V144-403-01

SpeedNut Kit Composite

Includes: Pressure Ring, Pressure Cup & Rubber Cap

V148-403-03

**SpeedNut Composite - With Turning Handles**

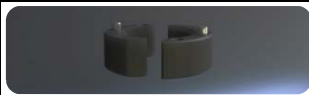
Includes: Pressure Ring.

V144-403-11

SpeedNut Kit Composite - With Turning Handles

Includes: Pressure Ring, Pressure Cup & Rubber Cap

V148-403-04

**Threaded Jaw Set Replacement Part**

Fits SpeedNut as well as Haweka Quicknut.

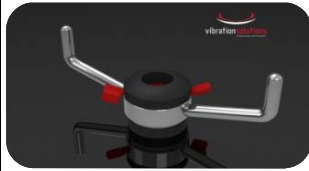
M142-403-01

RAVAGLIOLI

SPEEDNUTS & PARTS

Models

All / Alle / Tout (05/2003>)



SpeedNut Steel - With Bearing
Includes: Pressure Ring.

V142-404-02



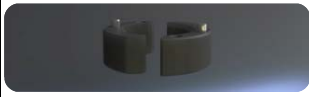
SpeedNut Kit Steel - With Bearing
Includes: Pressure Ring, Pressure Cup & Rubber Cap

V148-404-02



SpeedNut Composite
Includes: Pressure Ring.

V144-404-01



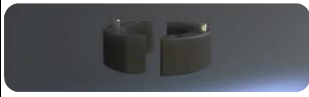
SpeedNut Kit Composite
Includes: Pressure Ring, Pressure Cup & Rubber Cap

V148-404-03



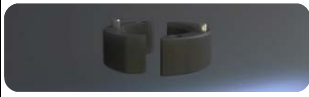
SpeedNut Composite - With Turning Handles
Includes: Pressure Ring.

V144-404-11



SpeedNut Kit Composite - With Turning Handles
Includes: Pressure Ring, Pressure Cup & Rubber Cap

V148-404-04



Threaded Jaw Set Replacement Part
Fits SpeedNut as well as Haweka Quicknut.

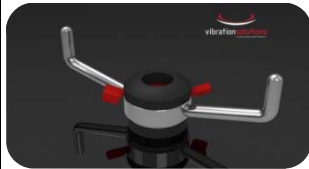
M142-404-01

SICAM

SPEEDNUTS & PARTS

Models

All / Alle / Tout



SpeedNut Steel - With Bearing
Includes: Pressure Ring.

V142-403-02



SpeedNut Kit Steel - With Bearing
Includes: Pressure Ring, Pressure Cup & Rubber Cap

V148-403-02



SpeedNut Composite
Includes: Pressure Ring.

V144-403-01



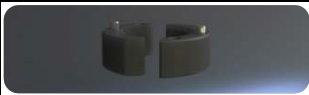
SpeedNut Kit Composite
Includes: Pressure Ring, Pressure Cup & Rubber Cap

V148-403-03



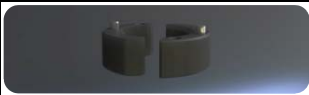
SpeedNut Composite - With Turning Handles
Includes: Pressure Ring.

V144-403-11



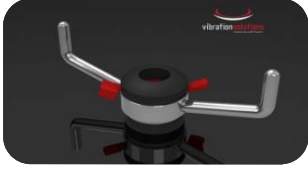


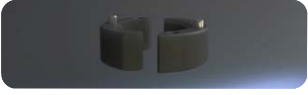
SpeedNut Kit Composite - With Turning Handles
Includes: Pressure Ring, Pressure Cup & Rubber Cap

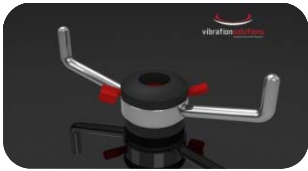


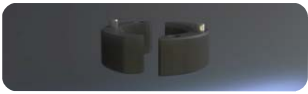
V148-403-04



Threaded Jaw Set Replacement Part
Fits SpeedNut as well as Haweka Quicknut.

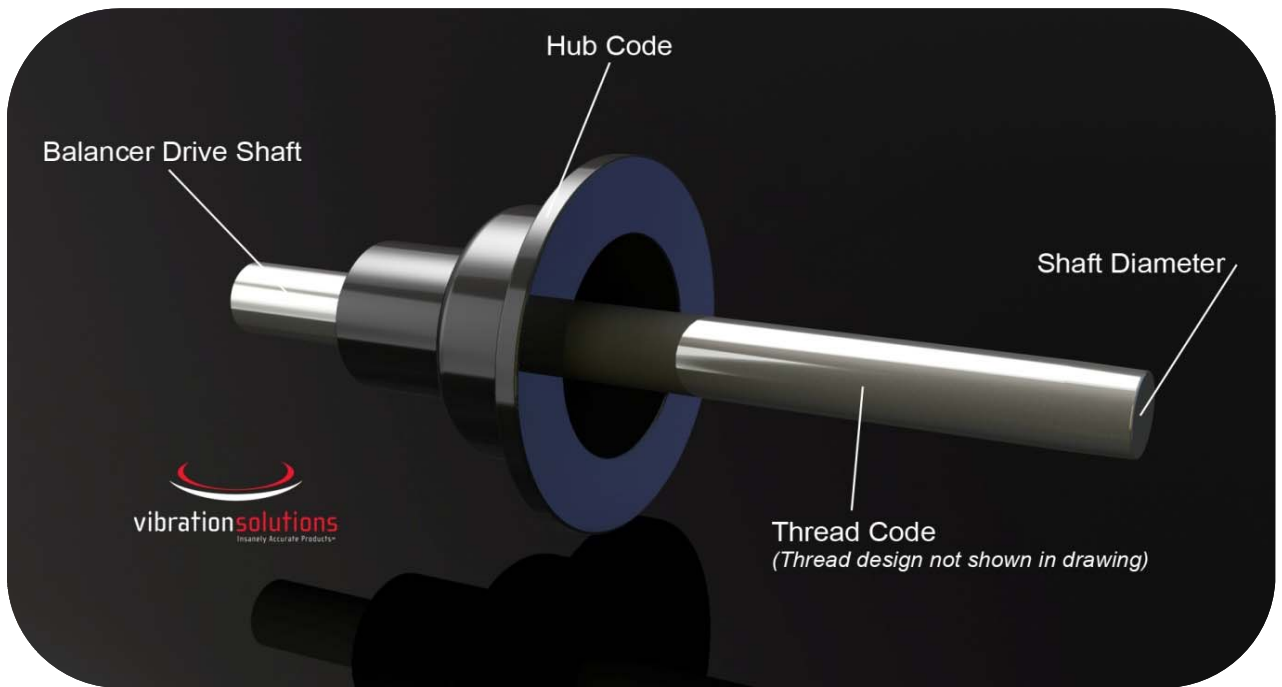
M142-403-01

SNAP-ON		SPEEDNUTS & PARTS	
Models	All / Alle / Tout (??/2008>)		
	SpeedNut Steel - With Bearing Includes: Pressure Ring.	V142-405-02	
	SpeedNut Kit Steel - With Bearing Includes: Pressure Ring, Pressure Cup & Rubber Cap	V148-405-02	
	SpeedNut Composite Includes: Pressure Ring.	V144-405-01	
	SpeedNut Kit Composite Includes: Pressure Ring, Pressure Cup & Rubber Cap	V148-405-03	
	SpeedNut Composite - With Turning Handles Includes: Pressure Ring.	V144-405-11	
	SpeedNut Kit Composite - With Turning Handles Includes: Pressure Ring, Pressure Cup & Rubber Cap	V148-405-04	
	Threaded Jaw Set Replacement Part Fits SpeedNut as well as Haweka Quicknut.	M142-405-01	

WERTHER		SPEEDNUTS & PARTS	
Models	Altair / Orion / Polaris / Pulsar / Pulsar2 / Quasar / Vega		
	SpeedNut Steel - With Bearing Includes: Pressure Ring.	V142-404-02	
	SpeedNut Kit Steel - With Bearing Includes: Pressure Ring, Pressure Cup & Rubber Cap	V148-404-02	
	SpeedNut Composite Includes: Pressure Ring.	V144-404-01	
	SpeedNut Kit Composite Includes: Pressure Ring, Pressure Cup & Rubber Cap	V148-404-03	
	SpeedNut Composite - With Turning Handles Includes: Pressure Ring.	V144-404-11	
	SpeedNut Kit Composite - With Turning Handles Includes: Pressure Ring, Pressure Cup & Rubber Cap	V148-404-04	
	Threaded Jaw Set Replacement Part Fits SpeedNut as well as Haweka Quicknut.	M142-404-01	

SpeedNut & Quicknut

	<p>Pressure Ring <i>Solid Turned</i></p> <p>Fits all SpeedNuts from Vibration Solutions as well as competitor's Quicknut.</p>	M140-000-01	
	<p>Pressure Cup <i>Injection Molded</i></p> <p>Fits all SpeedNuts from Vibration Solutions as well as competitor's Quicknut. Super strong design improves balancing results over competitor more flexible design. Diameter 5" (125mm).</p>	M140-000-02	
	<p>Rubber Protector Cap</p> <p>Slips onto Pressure Cup in order to protect finish of aluminum wheels.</p>	M140-000-03	



Shaft Diameter: For a 40mm diameter shaft use code 400, a 28.56mm (1 1/8") shaft use code 280.
Example: Large Truck Cone V150-400-14

Thread Type: The code is determined by the shaft diameter, the thread pitch and thread design. Code 404 means 40mm diameter with 4mm pitch, code 363 is for a 36mm shaft with 3mm pitch.

Example: Speednut V142-404-02

*Important note: Whereas, some balancers such as John Bean, Hofmann and many SnapOn balancers do have 40mm shaft diameters with a 4mm pitch, the thread design is custom made with a different thread angle than standard. A 404 thread will **not** work properly on any balancer that has a 405 shaft design. It will seem to work since both have a 4mm pitch, but the 404 thread will not penetrate fully into the shaft thread, resulting in great loss of torque on any QuickNut/SpeedNut and a high chance of the QuickNut/SpeedNut coming loose. It also results in premature wear. Do not mix 404 and 405 threads.*

Hub Code: Determined by the hub diameter, the hole location and sometimes the shaft design.

Example: SpeedPlate System V400-818-02

BALANCER LISTING

Brand	Model	Hub	Thread	Shaft
ACCUTURN	5100 / 5223 / 5500 / 5600 (serial # 51-0001 to 51-0622)	597	N/A	280
	1060 / 6100 / 6600 / 6700 / 6800	507	363	360
	5100 / 5600 (serial # 51-0623 to 51-1457) / 5800 / 6000	999	403	400
	1200 / 1220 / 1400 / 1420 / 1500 / 1520	958	405	400
	1250 / 1260 / 1450 / 1550 / 1650	589	404	400
	1820	818	405	400
	1850	589	404	400
	8902	N/A	466	460
ACTIA	3607 / 3608 / 3708	589	404	400
	3709 / 3809 (Pneumatic Shaft)	589	589	400
	3607 / 3608 / 3708	589	404	400
ATT	All / Alle / Tout	999	403	400
BALCO (Europe)	92 / b920 / b921 (With standard 28.56mm shaft)	957	285	280
	92 / b920 / b921 (With 28.56mm shaft & Quicknut)	957	283	280
	92 / b920 / b921 (With 40mm over-shaft)	958	403	400
	b930 / b940 / b945 / b946 / b948 / b975 / b985 / b995 / b996 (With standard 28.56mm shaft)	957	285	280
	b930 / b940 / b945 / b946 / b948 / b975 / b985 / b995 / b996 (With 28.56mm shaft & Quicknut)	957	283	280
	b930 / b940 / b945 / b946 / b948 / b975 / b985 / b995 / b996 (With 40mm over-shaft)	958	403	400
BEAR	80-303	818	405	400
	80-1010 / 80-1011 / 80-1012	589	404	400
	80-1013	589	404	400
BEISSBARTH	All / Alle / Tout	999	403	400
	All / Alle / Tout (Pneumatic shaft)	999		400
BOSCH (International)	All / Alle / Tout (<??/2008)	589	404	400
	All / Alle / Tout (<??/2008)	999	403	400
	All / Alle / Tout (<??/2008) Pneumatic Shaft	589	589	400
	All / Alle / Tout (<??/2008) Pneumatic Shaft	999		400
BOSCH (USA)	310 / 410 / 520 / 720 / 820HD	998	404	400
	All / Alle / Tout (Pneumatic shaft)	998		400

BALANCER LISTING

Brand	Model	Hub	Thread	Shaft
BUTLER	All / Alle / Tout		404	400
CEMB	All / Alle / Tout (<12/1994)	588	363	360
	All / Alle / Tout (<12/1994) Pneumatic Shaft	588	N/A	360
	All / Alle / Tout (01/1995>)	589	404	400
	All / Alle / Tout (01/1995>) Pneumatic Shaft	589	589	400
	All Truck / Alle LKW / Tout Camion (06/2000>)	589	404	400
COATS	700 / 850 / 1000 / 1001 / 1004 /1025 / 1050 / 1055 / 1250 (With Coats 28.56mm stub shaft)	937	288	280
	700 / 850 / 1000 / 1001 / 1004 /1025 / 1050 / 1055 / 1250 (With 28.56mm shaft & Quicknut)	937	283	280
	700 / 850 / 1000 / 1001 / 1004 /1025 / 1050 / 1055 / 1250 (With Coats 40mm over-shaft)	938	488	400
	700 / 850 / 1000 / 1001 / 1004 /1025 / 1050 / 1055 / 1250 (With 40mm over-shaft & Quicknut)	938	403	400
	XR1750 / XR1800 / XR1850	589	404	400
	775 / 875 / 1175	589	488	400
	6200HS	957	285	280
	6401	888	N/A	510
CORGI	All / Alle / Tout (<12/2006)	907	383	380
	All / Alle / Tout (01/2007>)	908	403	400
	All Truck / Alle LKW / Tout Camion	908	466	460
CORMACH	FC290 / FC310 / F350 / FC370 / FC390	589	404	400
	B92	589	404	400
COSENG / ATLAS	C301 / C311 / C322 / C366		363	360
FAIP	All / Alle / Tout (<12/2006)	907	383	380
	All / Alle / Tout (01/2007>)	908	403	400
	All Truck / Alle LKW / Tout Camion	908	466	460
FASEP	All / Alle / Tout		383	380
	All Truck / Alle LKW / Tout Camion			
FFB / FOG	All / Alle / Tout	999	403	400
	All / Alle / Tout (Pneumatic shaft)	999		400
FMC	4100 / 5800	827	404	400
	4100 / 4300 / 5800 (Removeable Hub/Shaft)	998	404	400

BALANCER LISTING

Brand	Model	Hub	Thread	Shaft
GIULIANO	All / Alle / Tout	589	404	400
GS	All / Alle / Tout	508	363	360
	All Truck / Alle LKW / Tout Camion		466	460
HESHBON	All / Alle / Tout	588	363	360
	All Truck / Alle LKW / Tout Camion			
HOFMANN	All / Alle / Tout	818	405	400
	All / Alle / Tout (Power Clamp)	818	818	400
HOFMANN MEGAPLAN	All / Alle / Tout	589	404	400
	All / Alle / Tout (Pneumatic Shaft)	589	589	400
	All Truck / Alle LKW / Tout Camion	589	404	400
HPA	All / Alle / Tout (<12/2006)	907	383	380
	All / Alle / Tout (01/2007>)	908	403	400
HUNTER	700	999	403	400
	800	N/A	N/A	400
	DSP7700 / DSP9700	997	408	400
	DSP9500 (1990-1992) With fine thread	617	403	400
	DSP8500 / DSP9000 / DSP9500	617	408	400
	DSP9100 / DSP9200 / DSP9600 GSP9200 / GSP9600 / GSP9700	618	408	400
	GSP9200 / GSP9600 / GSP9700 (With AutoClamp)	618	N/A	400
JOHN BEAN (America)	3.2 / 3.3 / 5.1 / 6.6 / 7.5 / 7.6	998	404	400
	8.5 / 8.6 / 8.7 / 9.7 / BFH800 / BFH1000 / VPI Series	818	405	400
JOHN BEAN (Europe)	b9000 / b9400 / b9450 / b9460 (With 28.56mm shaft + Quicknut)	958	283	280
	b9005 / b9455 / b9465 / b9750 / b9755 (With 40mm over-shaft)	958	405	400
	b9460P / b9465P / b9750P / b9755P / b9855P (Power Clamp)	958	818	400
	b9200	958	405	400
	b9250	818	405	400
	b9120 (Motorcycle only)	N/A	N/A	N/A
LAUNCH	All / Alle / Tout		363	360
	All Truck / Alle LKW / Tout Camion		363	360

BALANCER LISTING

Brand	Model	Hub	Thread	Shaft
M & B ENGINEERING	All / Alle / Tout		403	400
MONDOLFO FERRO	MT1000 - MT8000 (<i>With 28.56mm shaft</i>)	657	283	280
	MT1000 - MT8000 (<12/2006) <i>With 40mm over-shaft</i>	658	403	400
	MT800			
	MT2000 / MT3000 (<i>01/2007></i>)	908	403	400
	MT2310 / MT2610	908	466	460
	StartLine S202		363	360
NUSSBAUM	All / Alle / Tout	999	403	400
RANGER	All / Alle / Tout		363	360
RAVAGLIOLI	All / Alle / Tout (<04/2003)	588	363	360
	All / Alle / Tout (05/2003>)		404	400
SAXON	All / Alle / Tout	999	403	400
SCHENCK	All / Alle / Tout	999	403	400
SICAM	All / Alle / Tout	999	403	400
SICE	All / Alle / Tout	907	383	380
	All Truck / Alle LKW / Tout Camion	908	466	460
SIRIO	All Models (05/2003>)		404	400
SNAP-ON (America)	All / Alle / Tout (<??/2008)	957	285	400
	All / Alle / Tout (??/2008>)	958	405	400
	All Truck / Alle LKW / Tout Camion	958	403	400
SPACE	All Models (05/2003>)		404	400
STAR	SEC9 / SEC10 / SEC23 / SEC40 / SEC44 / SEC100 / SEC300		404	400
TECO	62 / 64 / 75 / 85	908		400
	91 / 93 / 94	908	466	460
TECALEMIT (U.K.)	All / Alle / Tout	999	403	400
	All / Alle / Tout (<i>Pneumatic shaft</i>)	999		400
TIP TOP	All / Alle / Tout	589	404	400
	All / Alle / Tout (<i>Pneumatic shaft</i>)	589	589	400
	All Truck / Alle LKW / Tout Camion	589	404	400
UNITE	U-100 / U-120 / U-130		363	360

BALANCER LISTING

Brand	Model	Hub	Thread	Shaft
WERTHER	Altair / Orion / Polaris / Pulsar / Pulsar2 / Vega	589	404	400
	<i>Pulsar2 (Pneumatic shaft)</i>	589	589	400
	Quasar	589	404	400