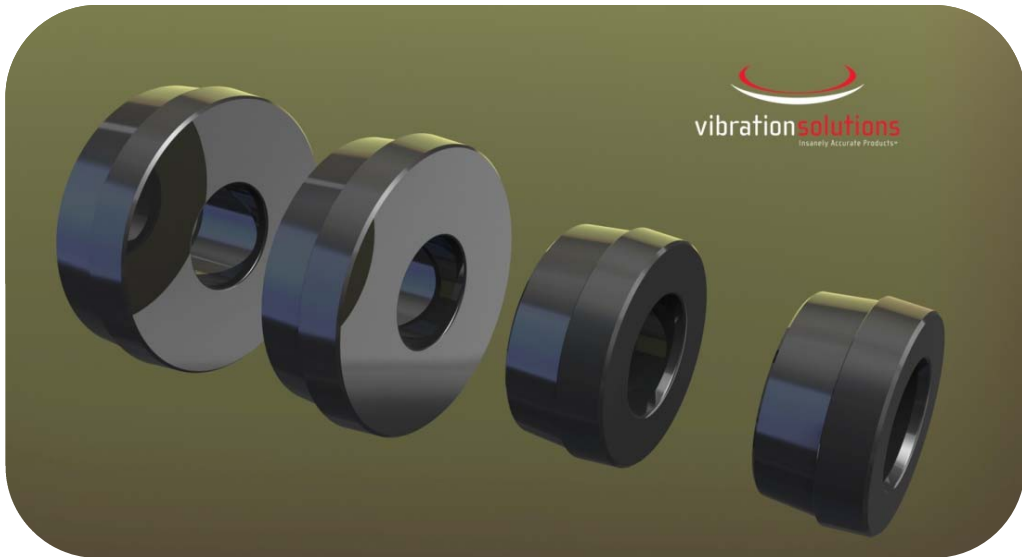


*The world's highest quality wheel balancing adaptors,
manufactured in North Carolina, USA.*



vibrationsolutions
Insanely Accurate Products™



OEM Precision Collets™

Tire Retail Shops

Tire Retail System Solution A

Complete System includes 12 pcs double sided Collets with a range covering virtually all cars, cross-over, SUV and light trucks on the market. Wheel hub diameters between 54mm and 125mm.

L163-400-01

Tire Retail System Solution B

Lite System includes 7 pcs double sided Collets with a range covering virtually all cars & cross-over vehicles on the market. Wheel hub diameters between 54mm and 93mm.

L163-400-02

Tire Retail System Solution C

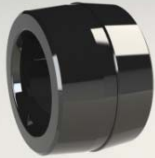
SUV/Truck System includes 4 pcs double sided Collets with a range covering virtually all SUV and light truck vehicles on the market. Wheel hub diameters between 100mm and 125mm.

L163-400-03

**OEM Precision Collet™ #1**

Side A: 54mm & 55mm.
Side B: 56mm, 56.5mm & 57mm.
Included in Solution A and Solution B.

L162-400-35

**OEM Precision Collet™ #2**

Side A: 58mm & 58.5mm.
Side B: 59mm, 59.5mm & 60mm.
Included in Solution A and Solution B.

L162-400-34

**OEM Precision Collet™ #3**

Side A: 63.3mm & 64mm.
Side B: 65mm, 65.5mm, 66mm & 66.5mm.
Included in Solution A and Solution B.

L162-400-33

**OEM Precision Collet™ #4**



Side A: 67mm & 68mm.
Side B: 69mm, 69.5mm, 70mm & 70.5mm.
Included in Solution A and Solution B.

L162-400-32

Tire Retail Shops

	<p>OEM Precision Collet™ #5 Side A: 71mm, 71.5mm, 72mm & 72.5mm. Side B: 73.8mm, 74mm & 74.5mm. <i>Included in Solution A and Solution B.</i></p>	L162-400-31	
	<p>OEM Precision Collet™ #6 Side A: 77.8mm & 78mm. Side B: 84mm & 85mm. <i>Included in Solution A and Solution B.</i></p>	L162-400-30	
	<p>OEM Precision Collet™ #7 Side A: 87mm. Side B: 92.5mm & 93mm. <i>Included in Solution A and Solution B.</i></p>	L162-400-29	
	<p>OEM Precision Collet™ #8 Side A: 95.4mm. Side B: 98mm. <i>Included in Solution A.</i></p>	L162-400-28	
	<p>OEM Precision Collet™ #9 Side A: 100mm. Side B: 105mm & 106mm. <i>Included in Solution A and Solution C.</i></p>	L162-400-27	
	<p>OEM Precision Collet™ #10 Side A: 107mm & 108mm. Side B: 109mm & 110mm. <i>Included in Solution A and Solution C.</i></p>	L162-400-26	

Tire Retail Shops

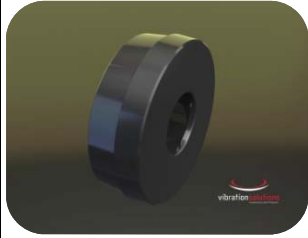
	<p>OEM Precision Collet™ #11 Side A: 113mm. Side B: 115.8mm (4.56") and 116.8mm (4.60"). <i>Included in Solution A and Solution C.</i> <i>Used with a Small Spacer Disk on most balancers.</i></p>	L162-400-25	
	<p>OEM Precision Collet™ #12 Side A: 121.6mm (4.77"). Side B: 124mm and 125mm. <i>Included in Solution A and Solution C.</i> <i>Used with a Small Spacer Disk on most balancers.</i></p>	L162-400-24	

Tire Retail Shops

Mini System

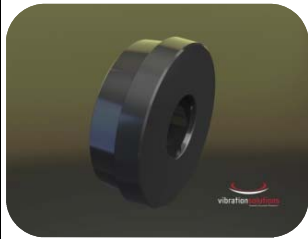
These Collets are made just for the most difficult SUV and light truck wheels from Jeep, Dodge and GM etc. These wheels have a plastic chrome looking disk covering the wheel. Also for Toyota, Lexus, Nissan and other Japanese SUV and light truck wheels.

L163-400-04

**OEM Precision Collet™**

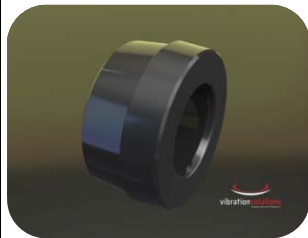
Side A: 106mm (*Lexus, Toyota*).
Side B: 110mm (*Lexus, Toyota*).
Included in Mini System.

L162-400-20

**OEM Precision Collet™**

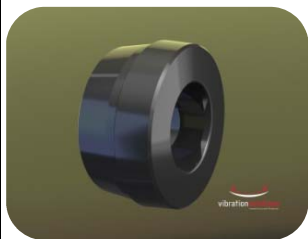
Side A: 100mm (*Acura, GM, Honda, Isuzu, Nissan*).
Side B: 108mm (*GM, Infiniti, Lexus, Mazda, Mitsubishi, Nissan, Suzuki, Toyota*).
Included in Mini System.

L162-400-21

**OEM Precision Collet™**

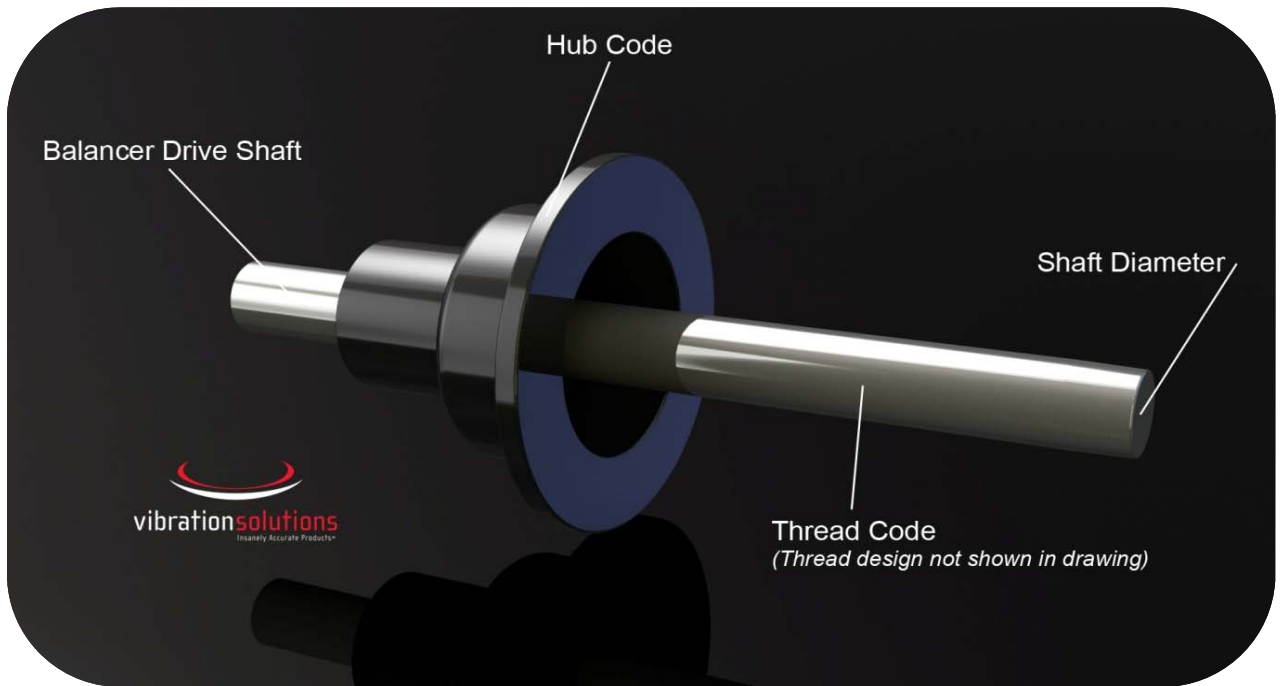
Side A: 66.5mm & 67mm (*Chrysler, Dodge, GM and others*).
Side B: 71.5mm (*Chrysler, Dodge, Eagle, Jeep and others*).
Included in Mini System.

L162-400-22

**OEM Precision Collet™**

Side A: 74mm & 74.5mm (*GM and others*).
Side B: 77.8mm & 78mm (*Chrysler, Dodge, GM and others*).
Included in Mini System.

L162-400-23



Shaft Diameter: For a 40mm diameter shaft use code 400, a 28.56mm (1 1/8") shaft use code 280.
Example: Large Truck Cone V150-400-14

Thread Type: The code is determined by the shaft diameter, the thread pitch and thread design. Code 404 means 40mm diameter with 4mm pitch, code 363 is for a 36mm shaft with 3mm pitch.

Example: Speednut V142-404-02

*Important note: Whereas, some balancers such as John Bean, Hofmann and many SnapOn balancers do have 40mm shaft diameters with a 4mm pitch, the thread design is custom made with a different thread angle than standard. A 404 thread will **not** work properly on any balancer that has a 405 shaft design. It will seem to work since both have a 4mm pitch, but the 404 thread will not penetrate fully into the shaft thread, resulting in great loss of torque on any QuickNut/SpeedNut and a high chance of the QuickNut/SpeedNut coming loose. It also results in premature wear. Do not mix 404 and 405 threads.*

Hub Code: Determined by the hub diameter, the hole location and sometimes the shaft design.
Example: SpeedPlate System V400-818-02

BALANCER LISTING

Brand	Model	Hub	Thread	Shaft
ACCUTURN	5100 / 5223 / 5500 / 5600 (serial # 51-0001 to 51-0622)	597	N/A	280
	1060 / 6100 / 6600 / 6700 / 6800	507	363	360
	5100 / 5600 (serial # 51-0623 to 51-1457) / 5800 / 6000	999	403	400
	1200 / 1220 / 1400 / 1420 / 1500 / 1520	958	405	400
	1250 / 1260 / 1450 / 1550 / 1650	589	404	400
	1820	818	405	400
	1850	589	404	400
	8902	N/A	466	460
ACTIA	3607 / 3608 / 3708	589	404	400
	3709 / 3809 (Pneumatic Shaft)	589	589	400
	3607 / 3608 / 3708	589	404	400
ATT	All / Alle / Tout	999	403	400
BALCO (Europe)	92 / b920 / b921 (With standard 28.56mm shaft)	957	285	280
	92 / b920 / b921 (With 28.56mm shaft & Quicknut)	957	283	280
	92 / b920 / b921 (With 40mm over-shaft)	958	403	400
	b930 / b940 / b945 / b946 / b948 / b975 / b985 / b995 / b996 (With standard 28.56mm shaft)	957	285	280
	b930 / b940 / b945 / b946 / b948 / b975 / b985 / b995 / b996 (With 28.56mm shaft & Quicknut)	957	283	280
	b930 / b940 / b945 / b946 / b948 / b975 / b985 / b995 / b996 (With 40mm over-shaft)	958	403	400
BEAR	80-303	818	405	400
	80-1010 / 80-1011 / 80-1012	589	404	400
	80-1013	589	404	400
BEISSBARTH	All / Alle / Tout	999	403	400
	All / Alle / Tout (Pneumatic shaft)	999		400
BOSCH (International)	All / Alle / Tout (<??/2008)	589	404	400
	All / Alle / Tout (<??/2008)	999	403	400
	All / Alle / Tout (<??/2008) Pneumatic Shaft	589	589	400
	All / Alle / Tout (<??/2008) Pneumatic Shaft	999		400
BOSCH (USA)	310 / 410 / 520 / 720 / 820HD	998	404	400
	All / Alle / Tout (Pneumatic shaft)	998		400

BALANCER LISTING

Brand	Model	Hub	Thread	Shaft
BUTLER	All / Alle / Tout		404	400
CEMB	All / Alle / Tout (<12/1994)	588	363	360
	All / Alle / Tout (<12/1994) Pneumatic Shaft	588	N/A	360
	All / Alle / Tout (01/1995>)	589	404	400
	All / Alle / Tout (01/1995>) Pneumatic Shaft	589	589	400
	All Truck / Alle LKW / Tout Camion (06/2000>)	589	404	400
COATS	700 / 850 / 1000 / 1001 / 1004 / 1025 / 1050 / 1055 / 1250 (With Coats 28.56mm stub shaft)	937	288	280
	700 / 850 / 1000 / 1001 / 1004 / 1025 / 1050 / 1055 / 1250 (With 28.56mm shaft & Quicknut)	937	283	280
	700 / 850 / 1000 / 1001 / 1004 / 1025 / 1050 / 1055 / 1250 (With Coats 40mm over-shaft)	938	488	400
	700 / 850 / 1000 / 1001 / 1004 / 1025 / 1050 / 1055 / 1250 (With 40mm over-shaft & Quicknut)	938	403	400
	XR1750 / XR1800 / XR1850	589	404	400
	775 / 875 / 1175	589	488	400
	6200HS	957	285	280
	6401	888	N/A	510
CORGI	All / Alle / Tout (<12/2006)	907	383	380
	All / Alle / Tout (01/2007>)	908	403	400
	All Truck / Alle LKW / Tout Camion	908	466	460
CORMACH	FC290 / FC310 / F350 / FC370 / FC390	589	404	400
	B92	589	404	400
COSENG / ATLAS	C301 / C311 / C322 / C366		363	360
FAIP	All / Alle / Tout (<12/2006)	907	383	380
	All / Alle / Tout (01/2007>)	908	403	400
	All Truck / Alle LKW / Tout Camion	908	466	460
FASEP	All / Alle / Tout		383	380
	All Truck / Alle LKW / Tout Camion			
FFB / FOG	All / Alle / Tout	999	403	400
	All / Alle / Tout (Pneumatic shaft)	999		400
FMC	4100 / 5800	827	404	400
	4100 / 4300 / 5800 (Removeable Hub/Shaft)	998	404	400

BALANCER LISTING

Brand	Model	Hub	Thread	Shaft
GIULIANO	All / Alle / Tout	589	404	400
GS	All / Alle / Tout	508	363	360
	All Truck / Alle LKW / Tout Camion		466	460
HESHBON	All / Alle / Tout	588	363	360
	All Truck / Alle LKW / Tout Camion			
HOFMANN	All / Alle / Tout	818	405	400
	All / Alle / Tout (Power Clamp)	818	818	400
HOFMANN MEGAPLAN	All / Alle / Tout	589	404	400
	All / Alle / Tout (Pneumatic Shaft)	589	589	400
	All Truck / Alle LKW / Tout Camion	589	404	400
HPA	All / Alle / Tout (<12/2006)	907	383	380
	All / Alle / Tout (01/2007>)	908	403	400
HUNTER	700	999	403	400
	800	N/A	N/A	400
	DSP7700 / DSP9700	997	408	400
	DSP9500 (1990-1992) With fine thread	617	403	400
	DSP8500 / DSP9000 / DSP9500	617	408	400
	DSP9100 / DSP9200 / DSP9600 GSP9200 / GSP9600 / GSP9700	618	408	400
	GSP9200 / GSP9600 / GSP9700 (With AutoClamp)	618	N/A	400
JOHN BEAN (America)	3.2 / 3.3 / 5.1 / 6.6 / 7.5 / 7.6	998	404	400
	8.5 / 8.6 / 8.7 / 9.7 / BFH800 / BFH1000 / VPI Series	818	405	400
JOHN BEAN (Europe)	b9000 / b9400 / b9450 / b9460 (With 28.56mm shaft + Quicknut)	958	283	280
	b9005 / b9455 / b9465 / b9750 / b9755 (With 40mm over-shaft)	958	405	400
	b9460P / b9465P / b9750P / b9755P / b9855P (Power Clamp)	958	818	400
	b9200	958	405	400
	b9250	818	405	400
	b9120 (Motorcycle only)	N/A	N/A	N/A
LAUNCH	All / Alle / Tout		363	360
	All Truck / Alle LKW / Tout Camion		363	360

BALANCER LISTING

Brand	Model	Hub	Thread	Shaft
M & B ENGINEERING	All / Alle / Tout		403	400
MONDOLFO FERRO	MT1000 - MT8000 (<i>With 28.56mm shaft</i>)	657	283	280
	MT1000 - MT8000 (<12/2006) <i>With 40mm over-shaft</i>	658	403	400
	MT800			
	MT2000 / MT3000 (01/2007>)	908	403	400
	MT2310 / MT2610	908	466	460
	StartLine S202		363	360
NUSSBAUM	All / Alle / Tout	999	403	400
RANGER	All / Alle / Tout		363	360
RAVAGLIOLI	All / Alle / Tout (<04/2003)	588	363	360
	All / Alle / Tout (05/2003>)		404	400
SAXON	All / Alle / Tout	999	403	400
SCHENCK	All / Alle / Tout	999	403	400
SICAM	All / Alle / Tout	999	403	400
SICE	All / Alle / Tout	907	383	380
	All Truck / Alle LKW / Tout Camion	908	466	460
SIRIO	All Models (05/2003>)		404	400
SNAP-ON (America)	All / Alle / Tout (<??/2008)	957	285	400
	All / Alle / Tout (??/2008>)	958	405	400
	All Truck / Alle LKW / Tout Camion	958	403	400
SPACE	All Models (05/2003>)		404	400
STAR	SEC9 / SEC10 / SEC23 / SEC40 / SEC44 / SEC100 / SEC300		404	400
TECO	62 / 64 / 75 / 85	908		400
	91 / 93 / 94	908	466	460
TECALEMIT (U.K.)	All / Alle / Tout	999	403	400
	All / Alle / Tout (<i>Pneumatic shaft</i>)	999		400
TIP TOP	All / Alle / Tout	589	404	400
	All / Alle / Tout (<i>Pneumatic shaft</i>)	589	589	400
	All Truck / Alle LKW / Tout Camion	589	404	400
UNITE	U-100 / U-120 / U-130		363	360

BALANCER LISTING

Brand	Model	Hub	Thread	Shaft
WERTHER	Altair / Orion / Polaris / Pulsar / Pulsar2 / Vega	589	404	400
	<i>Pulsar2 (Pneumatic shaft)</i>	<i>589</i>	<i>589</i>	<i>400</i>
	Quasar	589	404	400