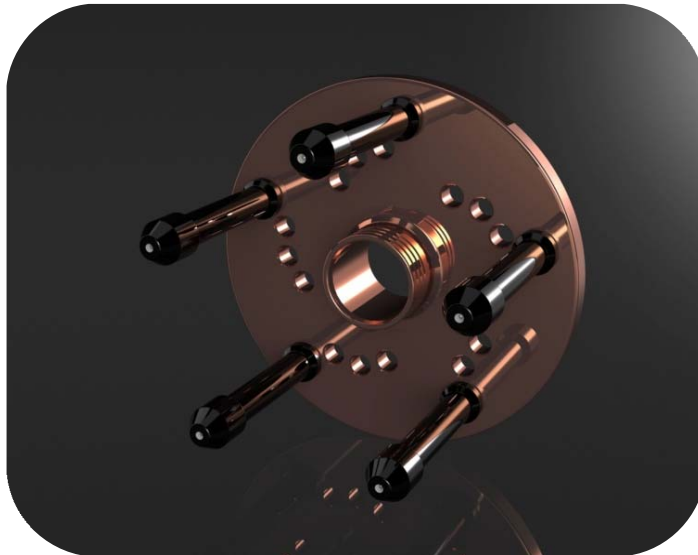


*The world's highest quality wheel balancing adaptors,
manufactured in North Carolina, USA.*



vibrationsolutions

Insanely Accurate Products™



CenTor Plate System Heavy Duty Version

With Storage Solution #1

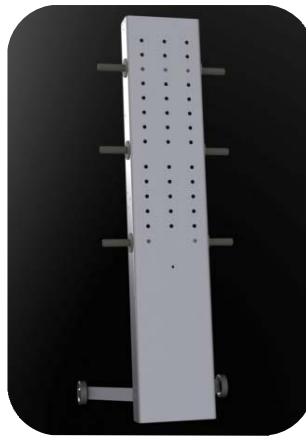
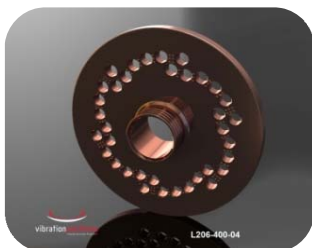
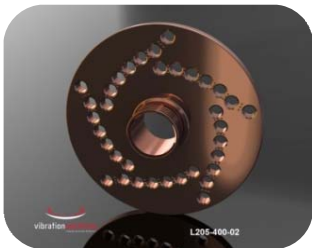
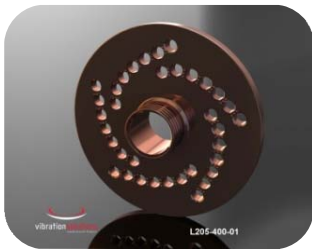
This four plate system covers over 99% of all passenger cars, cross-overs, SUVs and light trucks on the North American market.

Through hardened for durability and strength. Bolt patterns are deep engraved by each hole for ease of use.

Use 8 studs on 8 lug wheels and 6 studs on all six lug wheels for greatly improved accuracy.

The CenTor Plate System is the most accurate balancing concept available. Got a vibration problem? An unhappy customer? The CenTor Plate System is the go to solution! This version by Vibration Solutions is guaranteed to be the most accurate and easiest to use on the market.

Includes: Plate #1 (4 & 8 Lug) (L201-xx0-01), Plate #2 (5 Lug) (L205-xx0-01), Plate #3 (5 Lug) (L205-xx0-02), Plate #4 (6 Lug) (L206-400-04), 8 pcs B-style Studs (L275-075-11), 8 pcs A-style Studs (L275-100-13), 5 pcs C-style Studs (L275-105-14), Application Chart & User Manual (M299-001-01) and Storage Solutions (M280-000-03).



L200-400-01
L200-380-01
L200-360-01
L200-280-01

CentTor Plate System *Super Duty Version*

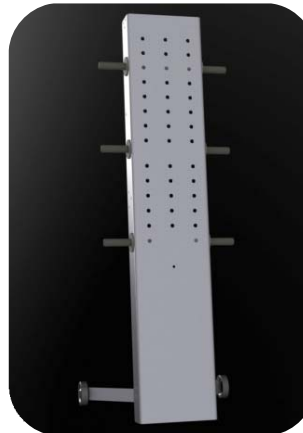
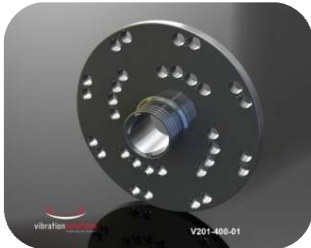
With Storage Solution #1

This four plate system covers over 99% of all passenger cars, cross-overs, SUVs and light trucks on the North American market.

Through hardened for durability and strength. Then surface hardened for scratch resistance and rust proofing. Bolt patterns are deep engraved by each hole for ease of use. The plates are color coded blue, red, yellow and green.

Use 8 studs on 8 lug wheels and 6 studs on all six lug wheels for greatly improved accuracy. The CentTor Plate System is the most accurate balancing concept available. Got a vibration problem? An unhappy customer? The CentTor Plate System is the go to solution! This version by Vibration Solutions is guaranteed to be the most accurate, easiest to use and most durable on the market.

Includes: Plate #1 (4 & 8 Lug) (V201-xx0-01), Plate #2 (5 Lug) (V205-xx0-01), Plate #3 (5 Lug) (V205-xx0-02), Plate #4 (6 Lug) (V206-400-04), 8 pcs B-style Studs (L275-075-11), 8 pcs A-style Studs (L275-100-13), 5 pcs C-style Studs (L275-105-14), Application Chart & User Manual (M299-001-01) and Storage Solutions (M280-000-03).



V200-400-01

CenTor Plate System Heavy Duty Version

Without Storage Solution

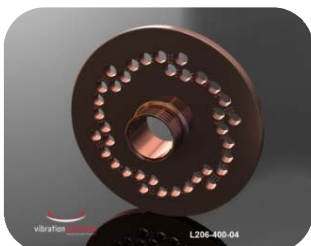
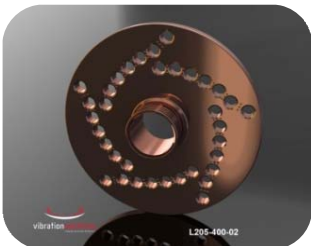
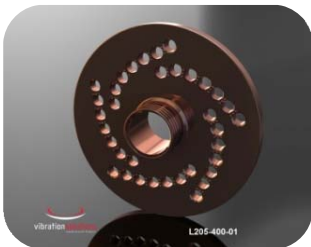
This four plate system covers over 99% of all passenger cars, cross-overs, SUVs and light trucks on the North American market.

Through hardened for durability and strength. Bolt patterns are deep engraved by each hole for ease of use.

Use 8 studs on 8 lug wheels and 6 studs on all six lug wheels for greatly improved accuracy.

The CenTor Plate System is the most accurate balancing concept available. Got a vibration problem? An unhappy customer? The CenTor Plate System is the go to solution! This version by Vibration Solutions is guaranteed to be the most accurate and easiest to use on the market.

Includes: Plate #1 (4 & 8 Lug) (L201-xx0-01), Plate #2 (5 Lug) (L205-xx0-01), Plate #3 (5 Lug) (L205-xx0-02), Plate #4 (6 Lug) (L206-400-04), 8 pcs B-style Studs (L275-075-11), 8 pcs A-style Studs (L275-100-13), 5 pcs C-style Studs (L275-105-14) and Application Chart & User Manual (M299-001-01).



L200-400-09
L200-380-09
L200-360-09
L200-280-09

CenTor Plate System Super Duty Version

Without Storage Solution

This four plate system covers over 99% of all passenger cars, cross-overs, SUVs and light trucks on the North American market.

Through hardened for durability and strength. Then surface hardened for scratch resistance and rust proofing. Bolt patterns are deep engraved by each hole for ease of use. The plates are color coded blue, red, yellow and green.

Use 8 studs on 8 lug wheels and 6 studs on all six lug wheels for greatly improved accuracy. The CenTor Plate System is the most accurate balancing concept available. Got a vibration problem? An unhappy customer? The CenTor Plate System is the go to solution! This version by Vibration Solutions is guaranteed to be the most accurate, easiest to use and most durable on the market.

Includes: Plate #1 (4 & 8 Lug) (V201-xx0-01), Plate #2 (5 Lug) (V205-xx0-01), Plate #3 (5 Lug) (V205-xx0-02), Plate #4 (6 Lug) (V206-400-04), 8 pcs B-style Studs (L275-075-11), 8 pcs A-style Studs (L275-100-13), 5 pcs C-style Studs (L275-105-14) and Application Chart & User Manual (M299-001-01).



V200-400-09

CenTor Plate System Heavy Duty Version

With Storage Solution #4

This four plate system covers over 99% of all passenger cars, cross-overs, SUVs and light trucks on the North American market.

Through hardened for durability and strength. Bolt patterns are deep engraved by each hole for ease of use.

Use 8 studs on 8 lug wheels and 6 studs on all six lug wheels for greatly improved accuracy.

The CenTor Plate System is the most accurate balancing concept available. Got a vibration problem? An unhappy customer? The CenTor Plate System is the go to solution! This version by Vibration Solutions is guaranteed to be the most accurate and easiest to use on the market.

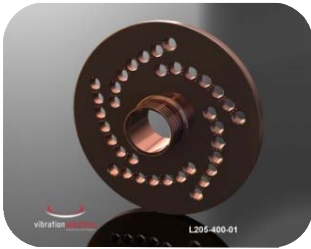
Includes: Plate #1 (4 & 8 Lug) (L201-xx0-01), Plate #2 (5 Lug) (L205-xx0-01), Plate #3 (5 Lug) (L205-xx0-02), Plate #4 (6 Lug) (L206-400-04), 8 pcs B-style Studs (L275-075-11), 8 pcs A-style Studs (L275-100-13), 5 pcs C-style Studs (L275-105-14), Application Chart & User Manual (M299-001-01) and Storage Solutions (M280-000-20).



L201-400-01



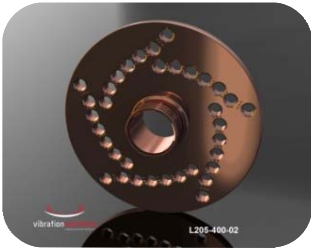
L275-075-11



L205-400-01



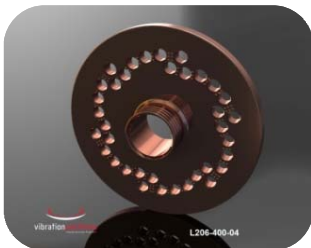
L275-100-13



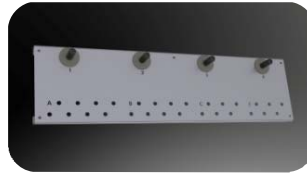
L205-400-02



L275-105-14



L206-400-04



L200-400-25
L200-380-25
L200-360-25
L200-280-25

CenTor Plate System Super Duty Version

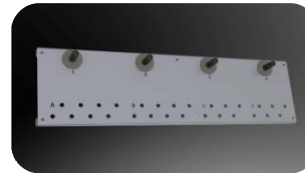
With Storage Solution #4

This four plate system covers over 99% of all passenger cars, cross-overs, SUVs and light trucks on the North American market.

Through hardened for durability and strength. Then surface hardened for scratch resistance and rust proofing. Bolt patterns are deep engraved by each hole for ease of use. The plates are color coded blue, red, yellow and green.

Use 8 studs on 8 lug wheels and 6 studs on all six lug wheels for greatly improved accuracy. The CenTor Plate System is the most accurate balancing concept available. Got a vibration problem? An unhappy customer? The CenTor Plate System is the go to solution! This version by Vibration Solutions is guaranteed to be the most accurate and easiest to use on the market.

Includes: Plate #1 (4 & 8 Lug) (V201-xx0-01), Plate #2 (5 Lug) (V205-xx0-01), Plate #3 (5 Lug) (V205-xx0-02), Plate #4 (6 Lug) (V206-400-04), 8 pcs B-style Studs (L275-075-11), 8 pcs A-style Studs (L275-100-13), 5 pcs C-style Studs (L275-105-14), Application Chart & User Manual (M299-001-01) and Storage Solutions (M280-000-20).



V200-400-25

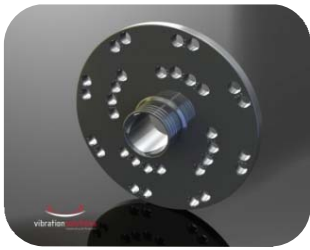
Individual Parts

CenTor Plate System

**CenTor Plate #1 Heavy Duty Version***Standard part in full system*

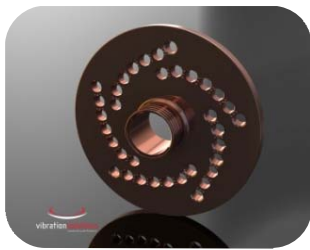
Bolt Patterns: 4x100mm, 4x4.25" (108mm), 4x110mm, 4x4.5" (114.3mm), 8x6.5" (165.1mm) & 8x170mm.
 CenTor Studs sold separately.

L201-400-01
 L201-380-01
 L201-360-01
 L201-280-01

**CenTor Plate #1 Super Duty Version***Standard part in full system*

Bolt Patterns: 4x100mm, 4x4.25" (108mm), 4x110mm, 4x4.5" (114.3mm), 8x6.5" (165.1mm) & 8x170mm.
 CenTor Studs sold separately.

V201-400-01

**CenTor Plate #2 Heavy Duty Version***Standard part in full system*

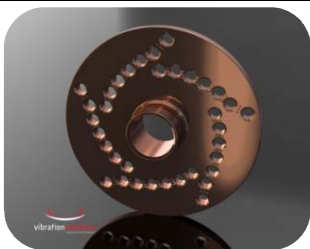
Bolt Patterns: 5x100mm, 5x110mm, 5x4.5" (114.3mm), 5x120mm, 5x5" (127mm), 5x135mm & 5x150mm.
 CenTor Studs sold separately.

L205-400-01
 L205-380-01
 L205-360-01
 L205-280-01

**CenTor Plate #2 Super Duty Version***Standard part in full system*

Bolt Patterns: 5x100mm, 5x110mm, 5x4.5" (114.3mm), 5x120mm, 5x5" (127mm), 5x135mm & 5x150mm.
 CenTor Studs sold separately.

V205-400-01

**CenTor Plate #3 Heavy Duty Version***Standard part in full system*

Bolt Patterns: 5x4.25" (108mm), 5x112mm, 5x115mm, 5x4.75" (120.65mm), 5x130mm, 5x5.5" (139.7mm) & 5x6.5" (165.1mm).
 CenTor Studs sold separately.

L205-400-02
 L205-380-02
 L205-360-02
 L205-280-02

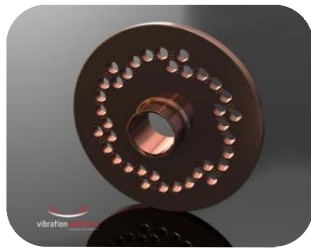
**CenTor Plate #3 Super Duty Version***Standard part in full system*

Bolt Patterns: 5x4.25" (108mm), 5x112mm, 5x115mm, 5x4.75" (120.65mm), 5x130mm, 5x5.5" (139.7mm) & 5x6.5" (165.1mm).
 CenTor Studs sold separately.

V205-400-02

Individual Parts

CenTor Plate System

**CenTor Plate #4 Heavy Duty Version***Standard part in full system*

Bolt Patterns: 6x4.5" (114.3mm), 6x115mm, 6x5" (127mm),
6x132mm, 6x135mm & 6x5.5" (139.7mm).

CenTor Studs sold separately.

L206-400-04
L206-380-04
L206-360-04
L206-280-04

**CenTor Plate #4 Super Duty Version***Standard part in full system*

Bolt Patterns: 6x4.5" (114.3mm), 6x115mm, 6x5" (127mm),
6x132mm, 6x135mm & 6x5.5" (139.7mm).

CenTor Studs sold separately.

V206-400-04

**CenTor Stud Style B***Standard part in all systems*

Short cone seat. Head diameter 24.5mm. Base diameter
24.5mm. Body length 75mm. Total length 92.8mm. *Used
mainly on steel light truck wheels.*

L275-075-11

**CenTor Stud Style D***Optional part*

Range Rover seat. Head diameter 34mm. Base diameter
34mm. Body length 75mm. Total length 92.8mm. *Used only
on Range Rover model before 1994.*

L275-075-12

**CenTor Stud Style A***Optional part*

Cone seat. Head diameter 20.9mm. Base diameter 20.9mm.
Body length 85mm. Total length 102.8mm. *Used on older
balancers with very short shafts.*

L275-085-13

**CenTor Stud Style C***Optional part*

Ball seat. Head diameter 24.5mm. Base diameter 24.5mm.
Body length 85mm. Total length 102.8mm. *Used on older
balancers with very short shafts.*

L275-085-14

**CenTor Stud Style E***Optional part*

Cone seat. Head diameter 19mm. Base diameter 20.9mm.
Body length 95mm. Total length 112.8mm. *Used mainly on
tuner wheels.*

L275-095-15

Individual Parts

CenTor Plate System

**CenTor Stud Style A***Standard part in all systems*

Cone seat. Head diameter 20.9mm. Base diameter 20.9mm. Body length 100mm. Total length 117.8mm. *Used on passenger, SUV and many light truck wheels.*

L275-100-13

**CenTor Stud Style C***Standard part in all systems*

Ball seat. Head diameter 24.5mm. Base diameter 24.5mm. Body length 105mm. Total length 122.8mm. *Used on older balancers with very short shafts.*

L275-105-14

**O-ring**

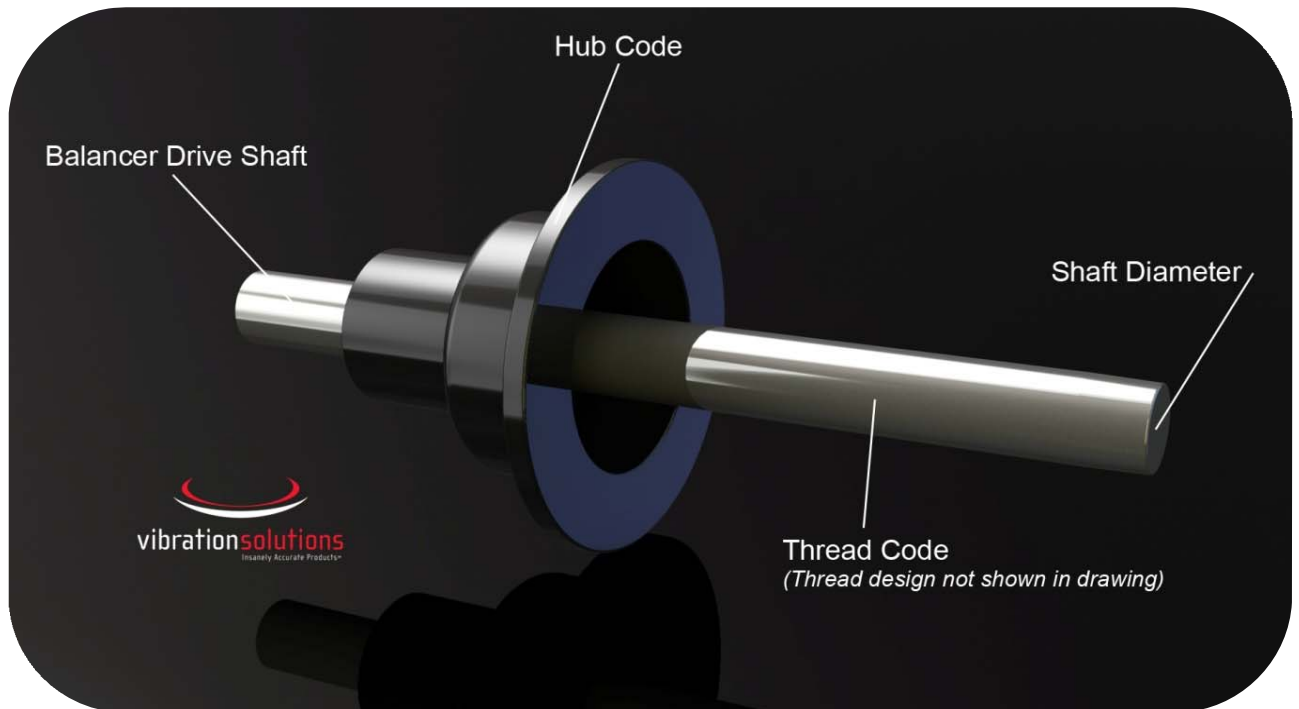
Bag of 25 pcs. Fits CenTor studs with serial numbers lower than A050000.

S275-001-02

**O-ring**

Bag of 25 pcs. Fits CenTor studs without serial numbers and with serial numbers higher than A050001.

S275-001-03



Shaft Diameter: For a 40mm diameter shaft use code 400, a 28.56mm (1 1/8") shaft use code 280.
Example: Large Truck Cone V150-400-14

Thread Type: The code is determined by the shaft diameter, the thread pitch and thread design. Code 404 means 40mm diameter with 4mm pitch, code 363 is for a 36mm shaft with 3mm pitch.

Example: Speednut V142-404-02

*Important note: Whereas, some balancers such as John Bean, Hofmann and many SnapOn balancers do have 40mm shaft diameters with a 4mm pitch, the thread design is custom made with a different thread angle than standard. A 404 thread will **not** work properly on any balancer that has a 405 shaft design. It will seem to work since both have a 4mm pitch, but the 404 thread will not penetrate fully into the shaft thread, resulting in great loss of torque on any QuickNut/SpeedNut and a high chance of the QuickNut/SpeedNut coming loose. It also results in premature wear. Do not mix 404 and 405 threads.*

Hub Code: Determined by the hub diameter, the hole location and sometimes the shaft design.

Example: SpeedPlate System V400-818-02

BALANCER LISTING

Brand	Model	Hub	Thread	Shaft
ACCUTURN	5100 / 5223 / 5500 / 5600 (serial # 51-0001 to 51-0622)	597	N/A	280
	1060 / 6100 / 6600 / 6700 / 6800	507	363	360
	5100 / 5600 (serial # 51-0623 to 51-1457) / 5800 / 6000	999	403	400
	1200 / 1220 / 1400 / 1420 / 1500 / 1520	958	405	400
	1250 / 1260 / 1450 / 1550 / 1650	589	404	400
	1820	818	405	400
	1850	589	404	400
	8902	N/A	466	460
ACTIA	3607 / 3608 / 3708	589	404	400
	3709 / 3809 (Pneumatic Shaft)	589	589	400
	3607 / 3608 / 3708	589	404	400
ATT	All / Alle / Tout	999	403	400
BALCO (Europe)	92 / b920 / b921 (With standard 28.56mm shaft)	957	285	280
	92 / b920 / b921 (With 28.56mm shaft & Quicknut)	957	283	280
	92 / b920 / b921 (With 40mm over-shaft)	958	403	400
	b930 / b940 / b945 / b946 / b948 / b975 / b985 / b995 / b996 (With standard 28.56mm shaft)	957	285	280
	b930 / b940 / b945 / b946 / b948 / b975 / b985 / b995 / b996 (With 28.56mm shaft & Quicknut)	957	283	280
	b930 / b940 / b945 / b946 / b948 / b975 / b985 / b995 / b996 (With 40mm over-shaft)	958	403	400
BEAR	80-303	818	405	400
	80-1010 / 80-1011 / 80-1012	589	404	400
	80-1013	589	404	400
BEISSBARTH	All / Alle / Tout	999	403	400
	All / Alle / Tout (Pneumatic shaft)	999		400
BOSCH (International)	All / Alle / Tout (<??/2008)	589	404	400
	All / Alle / Tout (<??/2008)	999	403	400
	All / Alle / Tout (<??/2008) Pneumatic Shaft	589	589	400
	All / Alle / Tout (<??/2008) Pneumatic Shaft	999		400
BOSCH (USA)	310 / 410 / 520 / 720 / 820HD	998	404	400
	All / Alle / Tout (Pneumatic shaft)	998		400

BALANCER LISTING

Brand	Model	Hub	Thread	Shaft
BUTLER	All / Alle / Tout		404	400
CEMB	All / Alle / Tout (<12/1994)	588	363	360
	All / Alle / Tout (<12/1994) Pneumatic Shaft	588	N/A	360
	All / Alle / Tout (01/1995>)	589	404	400
	All / Alle / Tout (01/1995>) Pneumatic Shaft	589	589	400
	All Truck / Alle LKW / Tout Camion (06/2000>)	589	404	400
COATS	700 / 850 / 1000 / 1001 / 1004 / 1025 / 1050 / 1055 / 1250 <i>(With Coats 28.56mm stub shaft)</i>	937	288	280
	700 / 850 / 1000 / 1001 / 1004 / 1025 / 1050 / 1055 / 1250 <i>(With 28.56mm shaft & Quicknut)</i>	937	283	280
	700 / 850 / 1000 / 1001 / 1004 / 1025 / 1050 / 1055 / 1250 <i>(With Coats 40mm over-shaft)</i>	938	488	400
	700 / 850 / 1000 / 1001 / 1004 / 1025 / 1050 / 1055 / 1250 <i>(With 40mm over-shaft & Quicknut)</i>	938	403	400
	XR1750 / XR1800 / XR1850	589	404	400
	775 / 875 / 1175	589	488	400
	6200HS	957	285	280
	6401	888	N/A	510
CORGI	All / Alle / Tout (<12/2006)	907	383	380
	All / Alle / Tout (01/2007>)	908	403	400
	All Truck / Alle LKW / Tout Camion	908	466	460
CORMACH	FC290 / FC310 / F350 / FC370 / FC390	589	404	400
	B92	589	404	400
COSENG / ATLAS	C301 / C311 / C322 / C366		363	360
FAIP	All / Alle / Tout (<12/2006)	907	383	380
	All / Alle / Tout (01/2007>)	908	403	400
	All Truck / Alle LKW / Tout Camion	908	466	460
FASEP	All / Alle / Tout		383	380
	All Truck / Alle LKW / Tout Camion			
FFB / FOG	All / Alle / Tout	999	403	400
	All / Alle / Tout (Pneumatic shaft)	999		400
FMC	4100 / 5800	827	404	400
	4100 / 4300 / 5800 (Removeable Hub/Shaft)	998	404	400

BALANCER LISTING

Brand	Model	Hub	Thread	Shaft
GIULIANO	All / Alle / Tout	589	404	400
GS	All / Alle / Tout	508	363	360
	All Truck / Alle LKW / Tout Camion		466	460
HESHBON	All / Alle / Tout	588	363	360
	All Truck / Alle LKW / Tout Camion			
HOFMANN	All / Alle / Tout	818	405	400
	All / Alle / Tout (Power Clamp)	818	818	400
HOFMANN MEGAPLAN	All / Alle / Tout	589	404	400
	All / Alle / Tout (Pneumatic Shaft)	589	589	400
	All Truck / Alle LKW / Tout Camion	589	404	400
HPA	All / Alle / Tout (<12/2006)	907	383	380
	All / Alle / Tout (01/2007>)	908	403	400
HUNTER	700	999	403	400
	800	N/A	N/A	400
	DSP7700 / DSP9700	997	408	400
	DSP9500 (1990-1992) With fine thread	617	403	400
	DSP8500 / DSP9000 / DSP9500	617	408	400
	DSP9100 / DSP9200 / DSP9600 GSP9200 / GSP9600 / GSP9700	618	408	400
	GSP9200 / GSP9600 / GSP9700 (With AutoClamp)	618	N/A	400
JOHN BEAN (America)	3.2 / 3.3 / 5.1 / 6.6 / 7.5 / 7.6	998	404	400
	8.5 / 8.6 / 8.7 / 9.7 / BFH800 / BFH1000 / VPI Series	818	405	400
JOHN BEAN (Europe)	b9000 / b9400 / b9450 / b9460 (With 28.56mm shaft + Quicknut)	958	283	280
	b9005 / b9455 / b9465 / b9750 / b9755 (With 40mm over-shaft)	958	405	400
	b9460P / b9465P / b9750P / b9755P / b9855P (Power Clamp)	958	818	400
	b9200	958	405	400
	b9250	818	405	400
	b9120 (Motorcycle only)	N/A	N/A	N/A
LAUNCH	All / Alle / Tout		363	360
	All Truck / Alle LKW / Tout Camion		363	360

BALANCER LISTING

Brand	Model	Hub	Thread	Shaft
M & B ENGINEERING	All / Alle / Tout		403	400
MONDOLFO FERRO	MT1000 - MT8000 (<i>With 28.56mm shaft</i>)	657	283	280
	MT1000 - MT8000 (<12/2006) <i>With 40mm over-shaft</i>	658	403	400
	MT800			
	MT2000 / MT3000 (01/2007>)	908	403	400
	MT2310 / MT2610	908	466	460
	StartLine S202		363	360
NUSSBAUM	All / Alle / Tout	999	403	400
RANGER	All / Alle / Tout		363	360
RAVAGLIOLI	All / Alle / Tout (<04/2003)	588	363	360
	All / Alle / Tout (05/2003>)		404	400
SAXON	All / Alle / Tout	999	403	400
SCHENCK	All / Alle / Tout	999	403	400
SICAM	All / Alle / Tout	999	403	400
SICE	All / Alle / Tout	907	383	380
	All Truck / Alle LKW / Tout Camion	908	466	460
SIRIO	All Models (05/2003>)		404	400
SNAP-ON (America)	All / Alle / Tout (<??/2008)	957	285	400
	All / Alle / Tout (??/2008>)	958	405	400
	All Truck / Alle LKW / Tout Camion	958	403	400
SPACE	All Models (05/2003>)		404	400
STAR	SEC9 / SEC10 / SEC23 / SEC40 / SEC44 / SEC100 / SEC300		404	400
TECO	62 / 64 / 75 / 85	908		400
	91 / 93 / 94	908	466	460
TECALEMIT (U.K.)	All / Alle / Tout	999	403	400
	All / Alle / Tout (<i>Pneumatic shaft</i>)	999		400
TIP TOP	All / Alle / Tout	589	404	400
	All / Alle / Tout (<i>Pneumatic shaft</i>)	589	589	400
	All Truck / Alle LKW / Tout Camion	589	404	400
UNITE	U-100 / U-120 / U-130		363	360

BALANCER LISTING

Brand	Model	Hub	Thread	Shaft
WERTHER	Altair / Orion / Polaris / Pulsar / Pulsar2 / Vega	589	404	400
	Pulsar2 (<i>Pneumatic shaft</i>)	589	589	400
	Quasar	589	404	400